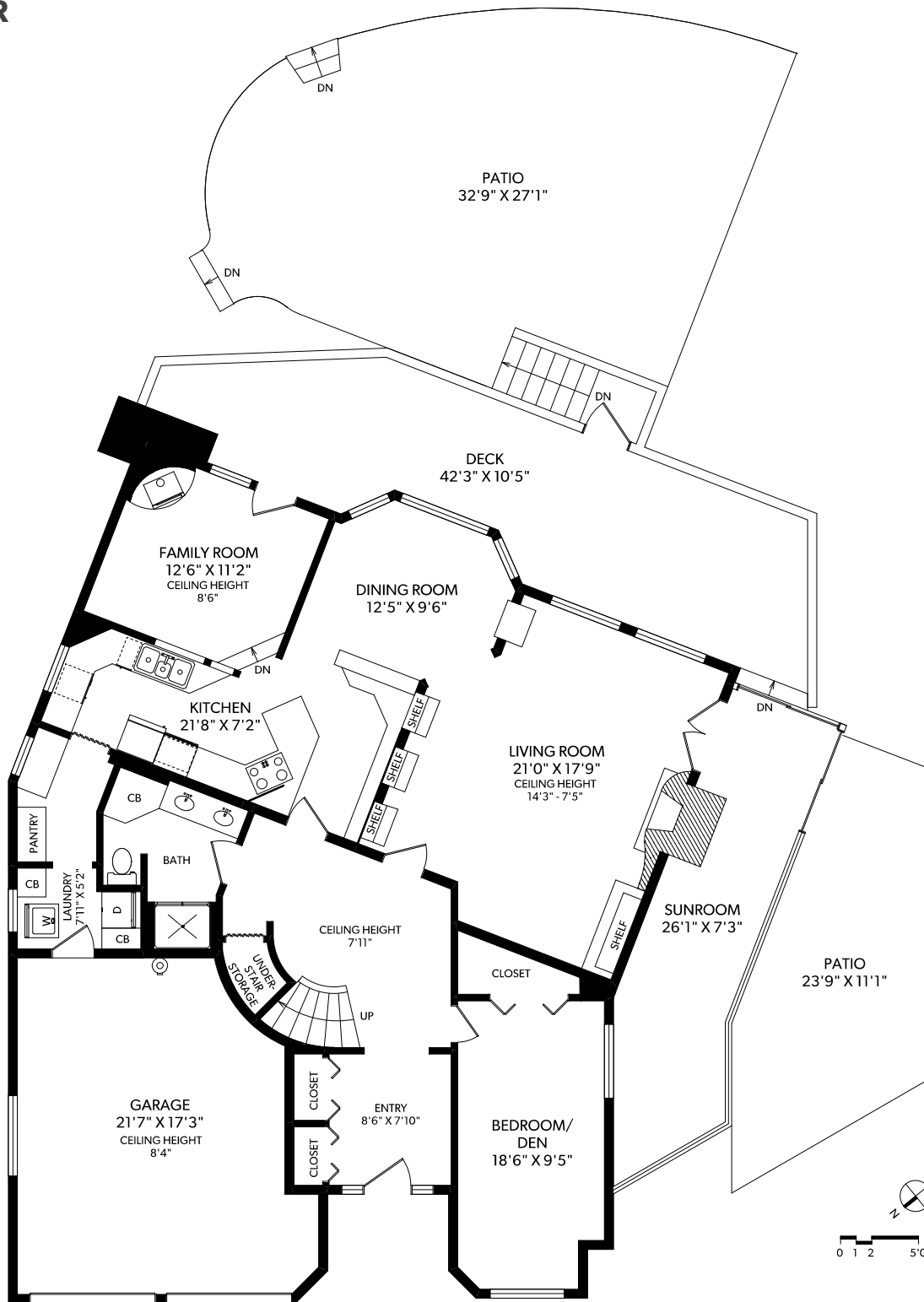


# MAIN FLOOR



FLOOR	FINISHED	UNFINISHED	TOTAL
MAIN	1554	0	1554
UPPER	1254	0	1254
<b>TOTAL</b>	<b>2808</b>	<b>0</b>	<b>2808</b>

OTHER AREAS	
GARAGE	393
SUNROOM	324
PATIOS	944
DECK	471
BALCONY	132
CRAWLSPACE	1023



## 2718 HIBBENS CLOSE

DOCUMENT PREPARED FOR THE EXCLUSIVE USE OF

## DOLORES TODD & HOLLY HARPER

250-388-6998  
ORDERS@REALFOTO.CA

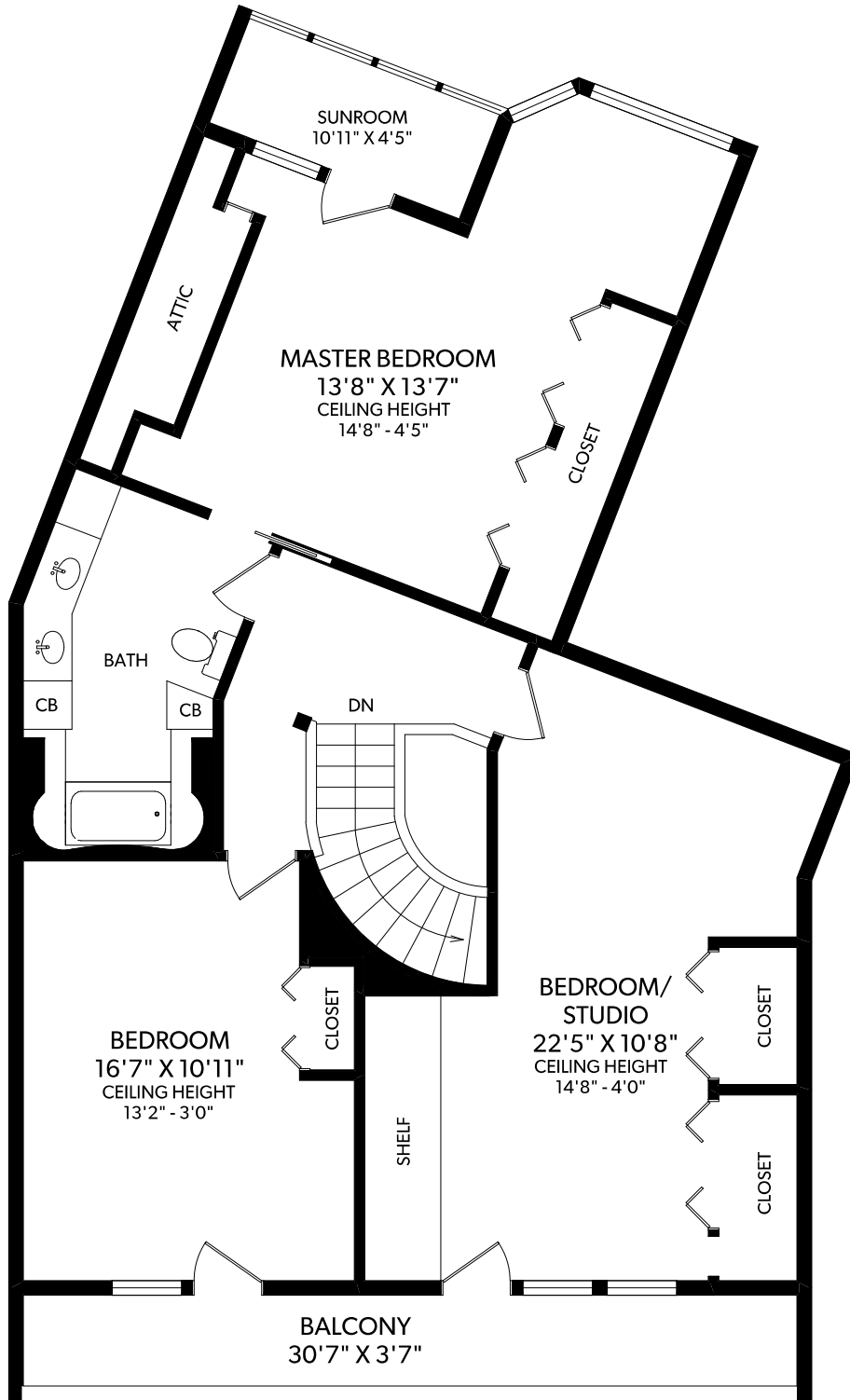
MEASURED 09/12/2018 BY TODD MAYER



CHRISTIE'S  
INTERNATIONAL REAL ESTATE

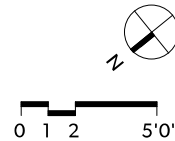
All information furnished regarding this property is from sources deemed reliable but no warranty or representation is made to the accuracy thereof.

# UPPER FLOOR



FLOOR	FINISHED	UNFINISHED	TOTAL
MAIN	1554	0	1554
UPPER	1254	0	1254
<b>TOTAL</b>	<b>2808</b>	<b>0</b>	<b>2808</b>

OTHER AREAS	
GARAGE	393
SUNROOM	324
PATIOS	944
DECK	471
BALCONY	132
CRAWLSPACE	1023



## 2718 HIBBENS CLOSE

DOCUMENT PREPARED FOR THE EXCLUSIVE USE OF

### DOLORES TODD & HOLLY HARPER

250-388-6998  
ORDERS@REALFOTO.CA

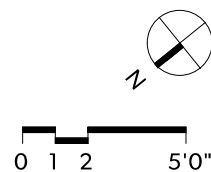
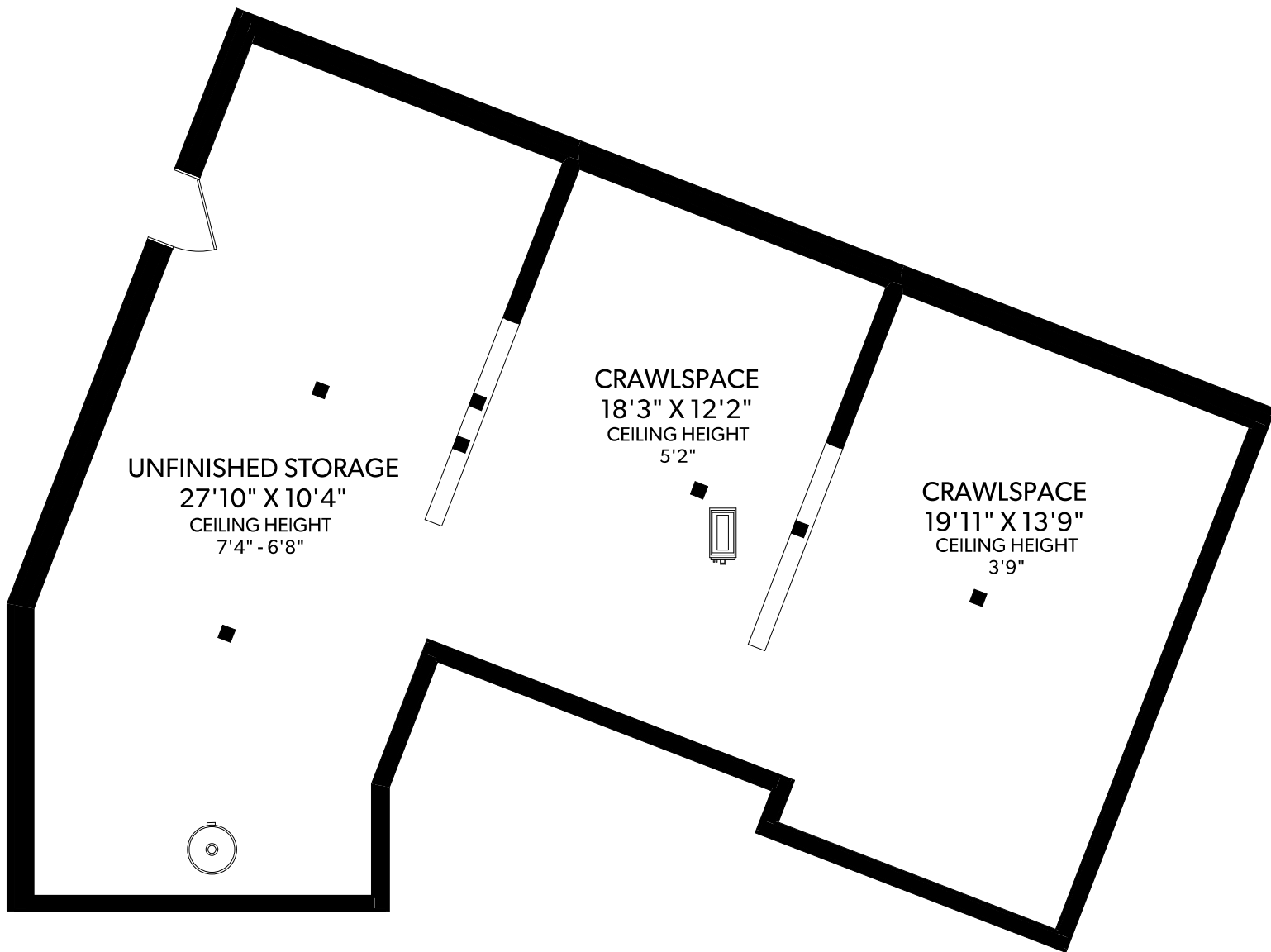
MEASURED 09/12/2018 BY TODD MAYER



**CHRISTIE'S**  
INTERNATIONAL REAL ESTATE

All information furnished regarding this property is from sources deemed reliable but no warranty or representation is made to the accuracy thereof.

# CRAWLSPACE



FLOOR	FINISHED	UNFINISHED	TOTAL
MAIN	1554	0	1554
UPPER	1254	0	1254
<b>TOTAL</b>	<b>2808</b>	<b>0</b>	<b>2808</b>

OTHER AREAS	
GARAGE	393
SUNROOM	324
PATIOS	944
DECK	471
BALCONY	132
CRAWLSPACE	1023



## 2718 HIBBENS CLOSE

DOCUMENT PREPARED FOR THE EXCLUSIVE USE OF

### DOLORES TODD & HOLLY HARPER

250-388-6998  
ORDERS@REALFOTO.CA

MEASURED 09/12/2018 BY TODD MAYER



**CHRISTIE'S**  
INTERNATIONAL REAL ESTATE

All information furnished regarding this property is from sources deemed reliable but no warranty or representation is made to the accuracy thereof.