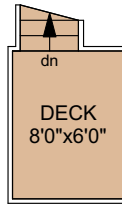
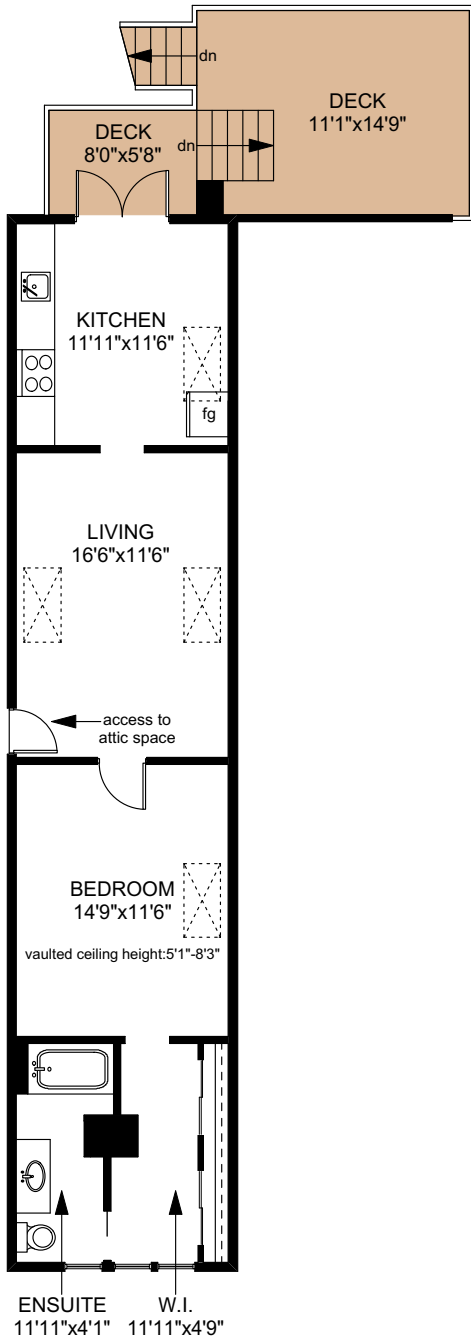
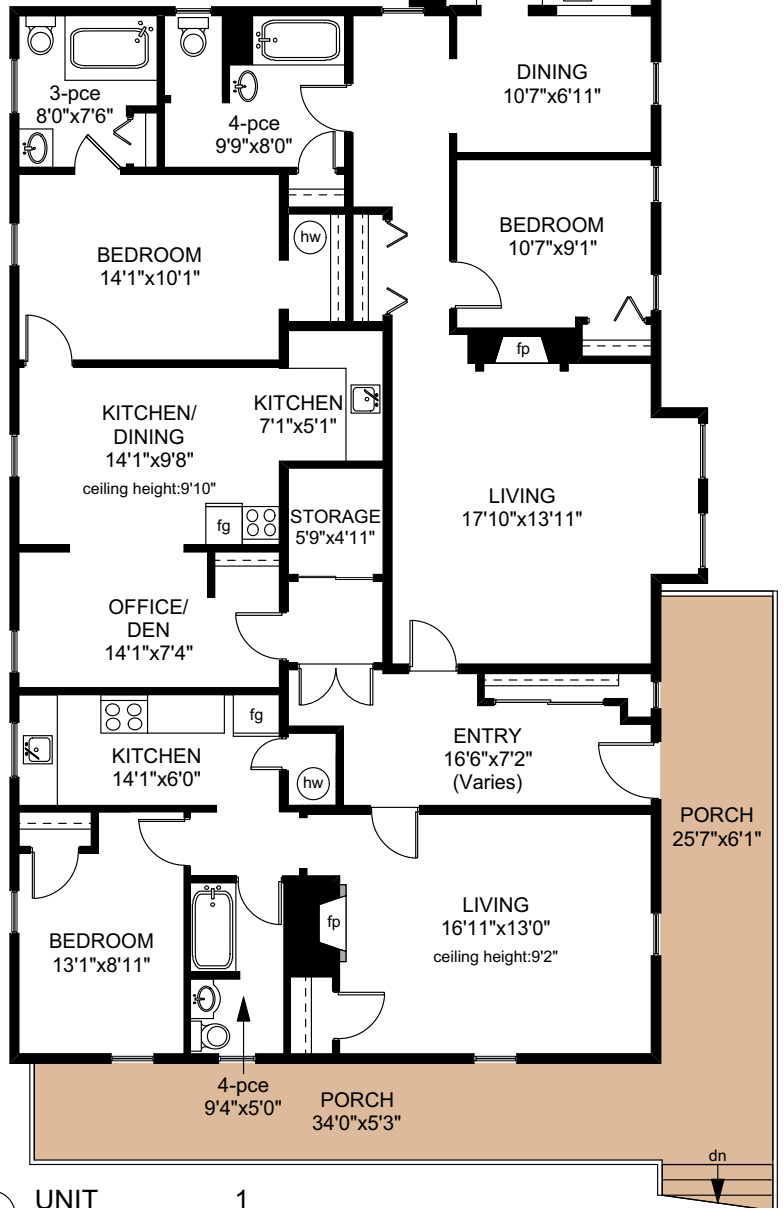


UNIT 4
719 SQ.FT
(Upper Floor)

645 BATTERY STREET

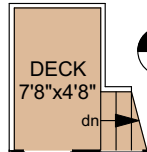


UNIT 3
619 SQ.FT

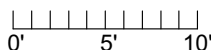
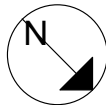


UNIT 1
594 SQ.FT

UNIT 2
807 SQ.FT



	FINISHED SQ. FT.	UNFINISHED SQ. FT.	TOTAL SQ. FT.
UNIT 1	594	0	594
UNIT 2	807	0	807
UNIT 3	619	0	619
UNIT 4	719	0	719
ENTRY	153	0	153
TOTAL	2892	0	2892
LAUNDRY	0	120	120
PORCH	0	366	366
DECKS	0	275	275



PREPARED FOR THE EXCLUSIVE USE OF
HOLLY HARPER OF NEWPORT REALTY

MEASURED ON: 08/01/17
DRAWING FILE: 13948

Tafe Measure VICTORIA, B.C.
Ph. 883.8894
www.tafemeasure.com